

TRUPULSE® TACTICAL LRF



Rugged, weatherproof, easy to use and small enough to fit in your pocket, the TruPulse® Tactical is the ideal handheld LRF for both the individual dismounted soldier and the precision shooter.

Designed with the needs of today's warrior in mind, LTI's Tactical laser gives you quick and accurate information using superior optics that help guarantee you capture the right measurements every time.

This LRF is very easy to use with a single button press to measure range and tilt and activate other on-board sensors which instantly calculate your ballistic solution and display it inside the scope.

Wind Correction

Select the appropriate cross-wind component and read the calculated hold-off that can be directly utilized in your rifle scope.

Measurement Modes

Measure range only or utilize one of five ballistic profiles that you have stored in the unit for the ultimate preparation.

Temperature Sensor

Exposed to ambient conditions but still protected for reliable temperature readings.

Ballistic Holdover

- Milliradians (MIL)
- Minutes of Angle (MOA)
- Inches (IN)/Centimeters (CM)
- Shoot-to-Range or Bullet-Drop Compensator (BDC)



Fully Programmable

Program up to five different cartridge combos that include:

- Ballistic Coefficient
- Muzzle Velocity
- Sight Height
- Turret Altitude (BDC Only)
- Turret Temperature (BDC Only)

Barometric Pressure Sensor

Measures station pressure and automatically calculates the equivalent altitude.

TruTargeting

Distinguishes your desired target from surrounding obstructions with Near, Far and Continuous modes.

In/Out Comm Port

Upload all your ballistic profiles and even download and save the profiles you modified in the field.

Superior Optics

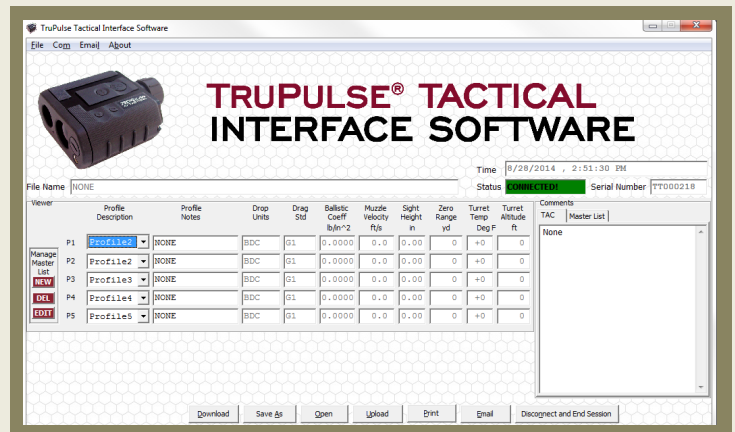
Rely on the 7x crystal-clear optics for increased confidence in your target assessment and easily adjust the brightness to various lighting conditions.



TRUPULSE® TACTICAL LRF

Performance Specifications

Range	Measurement Range:	10 - 2,500 yd* (10 - 2286 m)*
	Max. Compensated Range:	1,400 yd (1280 m)
	Tilt Range:	±90°
Accuracy	Range:	±1 yd (±1 m)
	Tilt Accuracy:	±1° within ±60°
	Temperature:	±2° F (±2° C)
	Pressure:	±0.5 inHg (±1.7 kPa)
Systems	Measuring System:	905 nm infrared pulse laser
	Display System:	Black-mask, dot-matrix LCD with in-scope projection
	Target System:	In-scope projection of aiming reticle
	Optical System:	Monocular, through-the-lens view, coincident with laser output beam
	Magnification:	7×
	Field of View:	110 yd at 1,000 yd (100 m at 915 m)
Ballistic Calculation Limits	Max. Tilt Angle	±90°
	Temperature Range:	0° to 122° F (-17° to 50° C)
	Pressure Range:	4 inHg (13.5 kPa) - 36 inHg (121 kPa)
Miscellaneous	Holdover options:	Shoot-to-Range or Bullet-Drop Compensator (BDC), Minutes of Angle (MOA), Milliradians (MIL), Inches (IN)/Centimeters (CM)
	Dimensions L x W x H:	5.2 x 4.5 x 2.1 in (13.2 x 11.4 x 5.3 cm)
	Weight (with battery):	14.4 oz (408 g)
	Structure:	Glass-filled polycarbonate composite
	TruTargeting Modes:	Standard, Near, Far, Continuous
	Environmental:	Water- and dust-proof IP55
	Laser Class:	FDA Class 1 (CFR 21)
	Storage Temperature:	-20° to 158° F (-29° to 70° C)
	Power Source:	CR123A
	Battery Life:	Intensive use / brightness: 4-5 hours Average use: 8-10 hours



Interface Software

The TruPulse® Tactical Interface Software is a free tool engineered to provide an alternative to manual laser ballistics entry.

- Build, edit and save ballistic profiles
- Upload profile groups to lasers
- Download profile groups from lasers
- Save and send profile groups
- Installs in one-click with no licensing fee

All specifications are subject to change without notice.

*Target acquisition can be affected by atmospheric conditions, such as heat shimmer, dust, target reflectance, traverse angle to target and beam spread.